

1266-1268 SAINT NICHOLAS AVENUE, WASHINGTON HEIGHTS

West Side of Saint Nicholas Ave between W 173rd St and W 174th St



Ground Floor: 2,200 sq ft 15 ft ceilings
Lower Level: 500 sq ft 8 ft ceilings
Frontage: 25 feet on St. Nicholas Ave
Asking Rent: Upon request
Possession: Immediate
Comments: • Divisible to 1,000 sq ft
• All uses considered.
• Ideal for medical groups, fast casual and general retail.
• Bathrooms and HVAC in place.

Neighbors Include:

- New York-Presbyterian Hospital
- Yeshiva University
- Columbia University Medical Center
- Neurological Institute of New York
- GWB Marketplace (Blink Fitness, Buffalo Wild Wings, Time Warner Cable, GAP)
- USA Vein Clinics
- South Beach Restaurant and Lounge

Joshua Gettler
212.251.0627
jgettler@newstretra.com

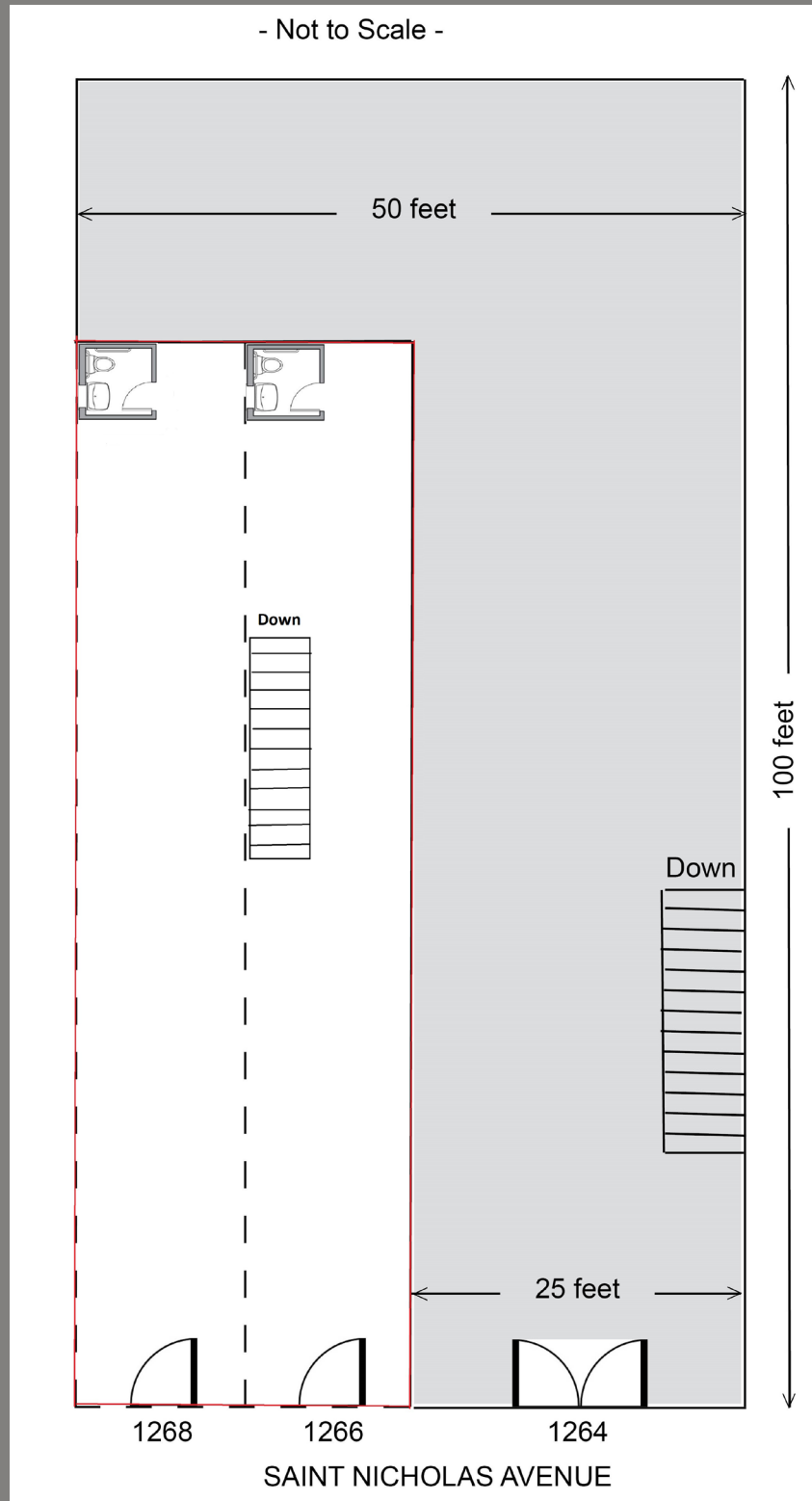
Matthew Gorman
212.251.0626
mgorman@newstretra.com

Exclusive Leasing Agent
NEW STREET
REALTY ADVISORS

The information is from sources deemed reliable, however, we have not verified its accuracy, and make no representation about it. It is submitted subject to the possibility of errors, omissions, change of price, rental or other conditions, prior sale, lease or financing, or withdrawal without notice.

1266-1268 SAINT NICHOLAS AVENUE, WASHINGTON HEIGHTS

West Side of Saint Nicholas Ave between W 173rd St and W 174th St



Joshua Gettler
212.251.0627
jgettler@newstreetra.com

Matthew Gorman
212.251.0626
mgorman@newstreetra.com

Christopher Bruggers
212.644.5015
cbruggers@newstreetra.com

Exclusive Leasing

