

150 WEST 26TH STREET

South Side of West 26th Street between 6th and 7th Avenues



Size: Ground Floor: 2,848 square feet (divisible)

Basement: 2,370 square feet

Possession: Immediate

Asking Rent: Upon request

Ceiling Height: Ground Floor: 12.5 feet slab to slab

Frontage: 30 feet on West 26th Street

Comments:

- First time available in 35 years
- Prime Chelsea location; one block from the 1, 2, 3 subway line
- Space to delivered in white box condition
- All uses considered, space can be vented
- Neighbors include: Fashion Institute of Technology, Hilton Hotel, The Ainsworth, Whole Foods and Planet Fitness

Joshua Gettler

212.251.0627

jgettler@newstreetra.com

Matthew Gorman

212.251.0626

mgorman@newstreetra.com

Christopher Bruggers

212.644.5015

cbruggers@newstreetra.com

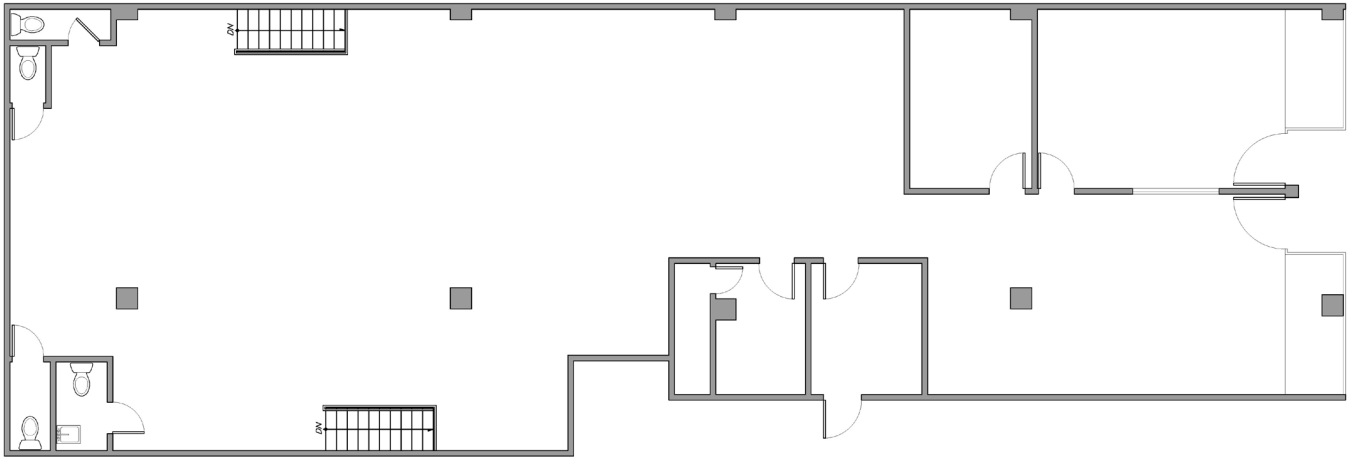
Exclusive Leasing Agent



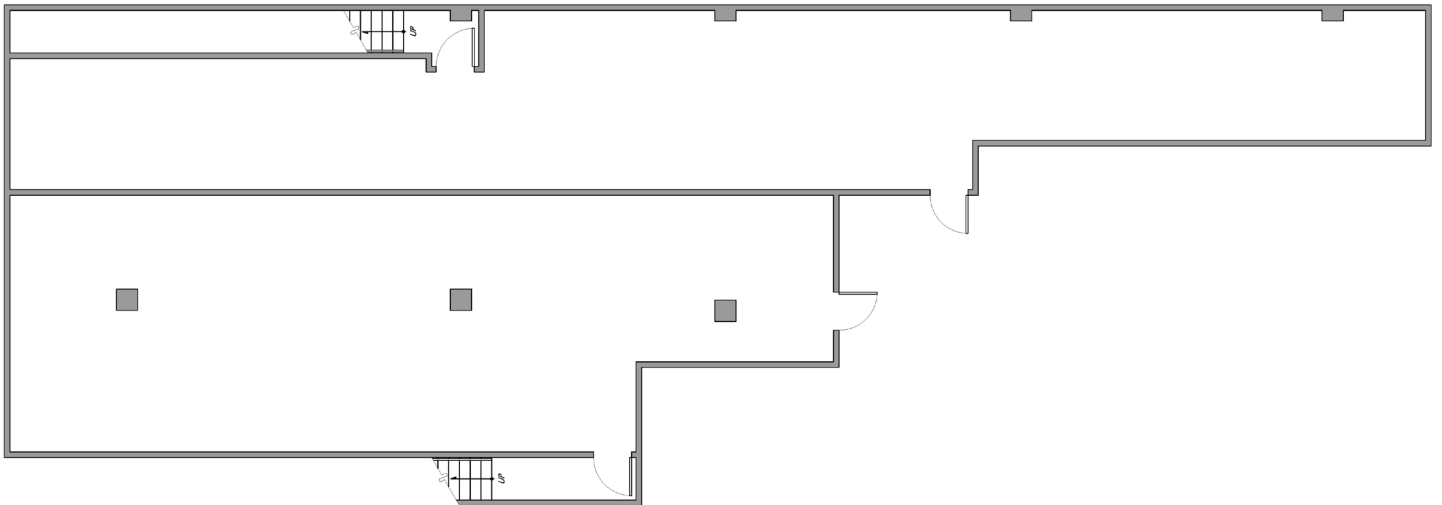
The information is from sources deemed reliable, however, we have not verified its accuracy, and make no representation about it. It is submitted subject to the possibility of errors, omissions, change of price, rental or other conditions, prior sale, lease or financing, or withdrawal without notice.

150 WEST 26TH STREET

South Side of West 26th Street between 6th and 7th Avenues



2
A001
EXISTING CONDITIONS PLAN - GROUND FLOOR
1/4" = 1'-0"



2
A001
EXISTING CONDITIONS PLAN - CELLAR
1/4" = 1'-0"

Joshua Gettler
212.251.0627
jgettler@newstreetra.com

Matthew Gorman
212.251.0626
mgorman@newstreetra.com

Christopher Bruggers
212.644.5015
cbruggers@newstreetra.com

Exclusive Leasing Agent

