

# 17 East 27th Street, NoMad

North Side of E 27th St between Madison Ave and Fifth Ave



## WE ARE PLEASED TO OFFER THE FOLLOWING RETAIL/OFFICE SPACE FOR LEASE:

- Space: Ground Floor: 5,000 square feet
- Frontage: 47.5 feet on East 27th Street
- Ceiling Height: Ground Floor: 14 feet
- Possession: Immediate
- Asking Rent: Upon Request
- Retail Neighbors: Blue Dot, Natuzzi, Poliform, Essen, B&B Italia, Truman's, Rocco's, Birch Coffee, Smile Pop and Seven Grams Caffe
- Institutional Neighbors: Facebook, Madison Square Park, The James Hotel, WeWork, New York Life HQ, Credit Suisse HQ
- Comments:
- Located at the base of a luxury residential building
  - 7 day a week pedestrian traffic
  - All uses welcome; reasonable divisions considered
  - Located one block from the 6, N, R and W subway lines

Matthew Gorman  
212.251.0626  
mgorman@newstreetra.com

Joshua Gettler  
212.251.0627  
jgettler@newstreetra.com

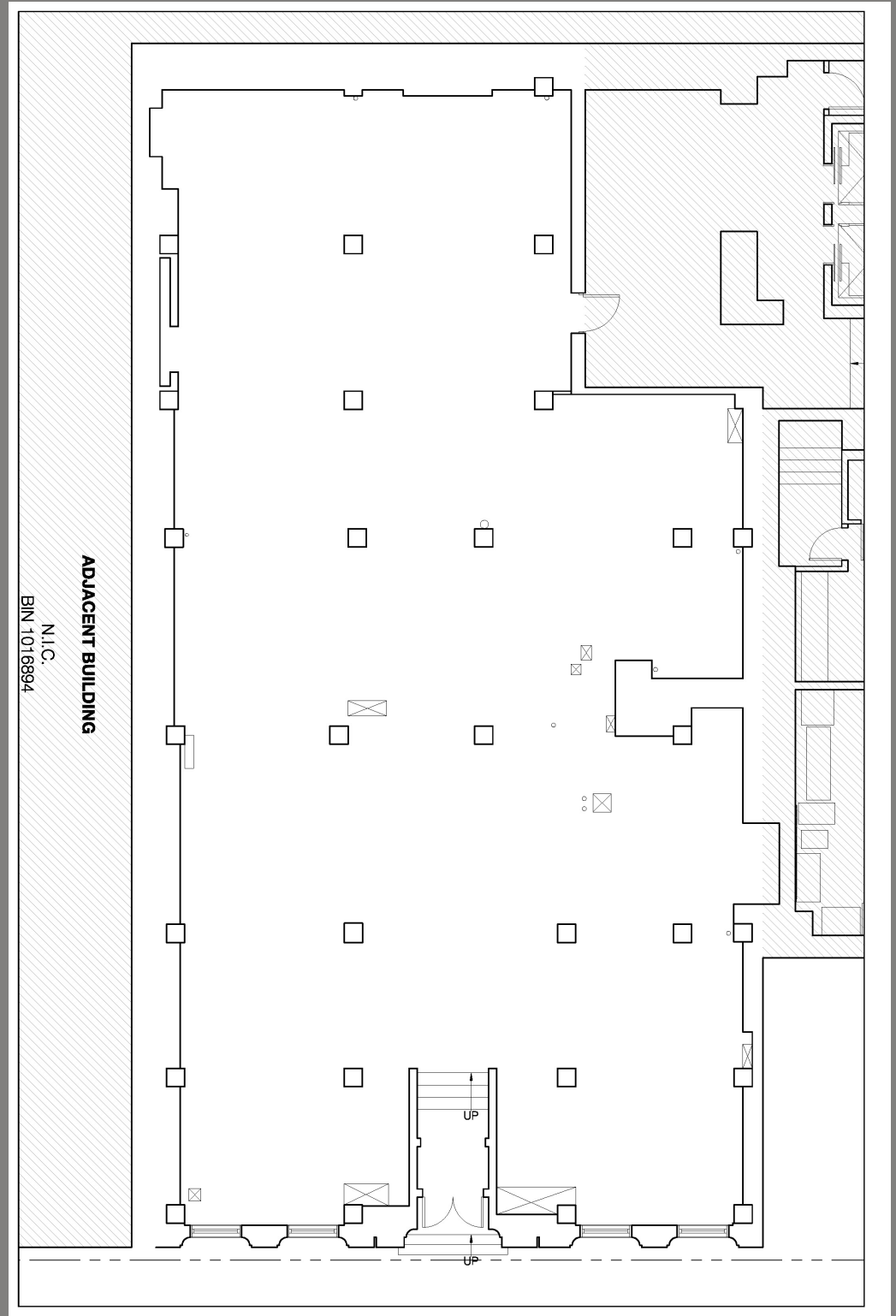
Exclusive Agent



# 17 EAST 27TH STREET, NOMAD

North Side of E 27th St between Madison Ave and Fifth Ave

Ground Floor Plan - 5,000 Rentable Square Feet - Not to Scale



Matthew Gorman  
212.251.0626  
mgorman@newstreetra.com

Joshua Gettler  
212.251.0627  
jgettler@newstreetra.com

Christopher Bruggers  
212.644.5015  
cbruggers@newstreetra.com

Exclusive Agent

