

460 WEST 35TH STREET

South Side of West 35th Street between 9th and 10th Avenues



- Space:** Ground Floor: 2,516 sq. Ft.
Second Floor: 2,100 sq. Ft.
- Frontage:** 25 Ft. 5 inches on West 35th Street
- Ceiling Height:** Approximately 12 Ft.
- Possession:** March 1, 2017
- Asking Rent:** Upon Request
- Comments:**
- Create your own identity on Manhattan's West Side
 - Column Free space with heavy Floor loads
 - All uses considered
 - Ideal For general retail and offices, art galleries, high-end fitness boutiques, production companies and theaters
 - Directly adjacent to a brand new 17 story, 151 key Four Points by Sheraton Hotel

Joshua Gettler

212.251.0627

jgettler@newstreetra.com

Matthew Gorman

212.251.0626

mgorman@newstreetra.com

Christopher Bruggers

212.644.5015

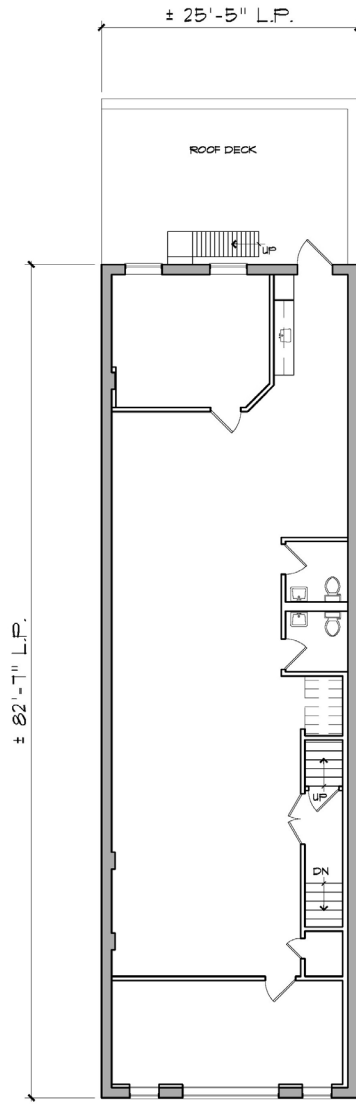
cbruggers@newstreetra.com

Exclusive Leasing Agent

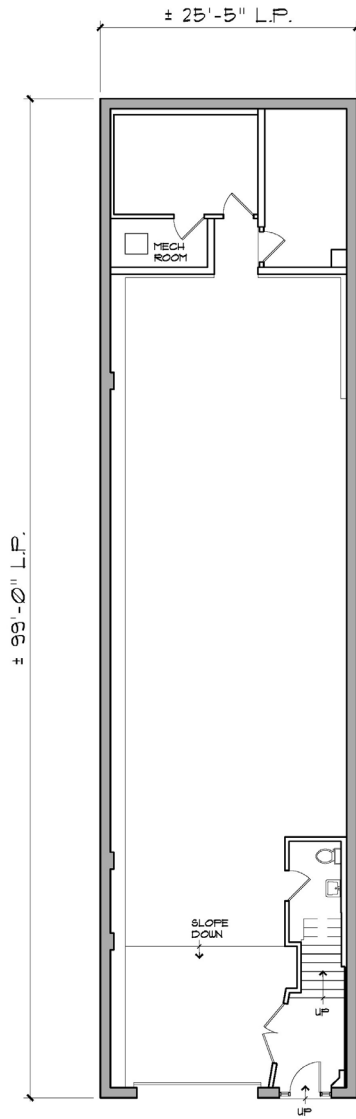


460 WEST 35TH STREET

South Side of West 35th Street between 9th and 10th Avenues



SECOND FLOOR PLAN



FIRST FLOOR PLAN

Joshua Gettler
212.251.0627
jgettler@newstreetra.com

Matthew Gorman
212.251.0626
mgorman@newstreetra.com

Christopher Bruggers
212.644.5015
cbruggers@newstreetra.com

Exclusive Leasing Agent

